

## 1. 基本信息

设备编号	3125-00011
编号类型	内部编号
设备型号	M1280D
建档日期	2017-10-16 15:46:14
备案有效期	2018-10-16 15:46:14
产权单位	上海市机械施工集团有限公司
采购日期	2010-03-17
产地	中国
制造商	FAVCO
臂长	64 M
最大起重量	100 T*M
起重卷扬容绳量	800 M
对地压强（地耐力参数）	kg/cm <sup>2</sup>
总重量（约）	475 T

## 2. 结构反力

图1:

□

最大塔身高度 I	
爬距范围 II	

风速 结构反力	工作状态风速	非工作状态风速
M		
V		
MK		
H1		
H2		

图2:

□

风速 结构反力	工作状态风速	非工作状态风速
		20
M	2209	926
V	372	318
S	7	36
MK		

T	581	284
风速	工作状态风速	非工作状态风速
U	395	125
结构反力		
	20	42

图3:

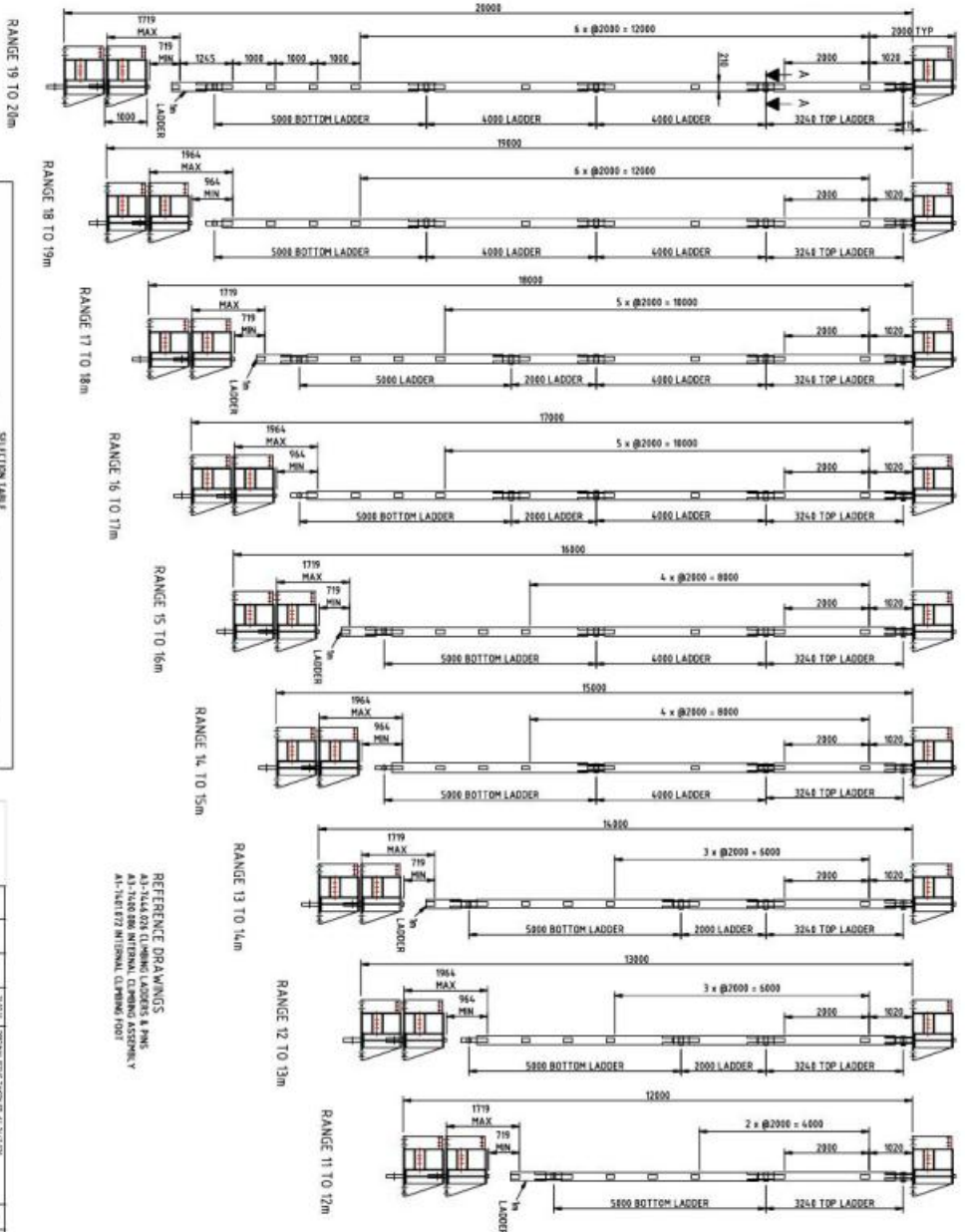
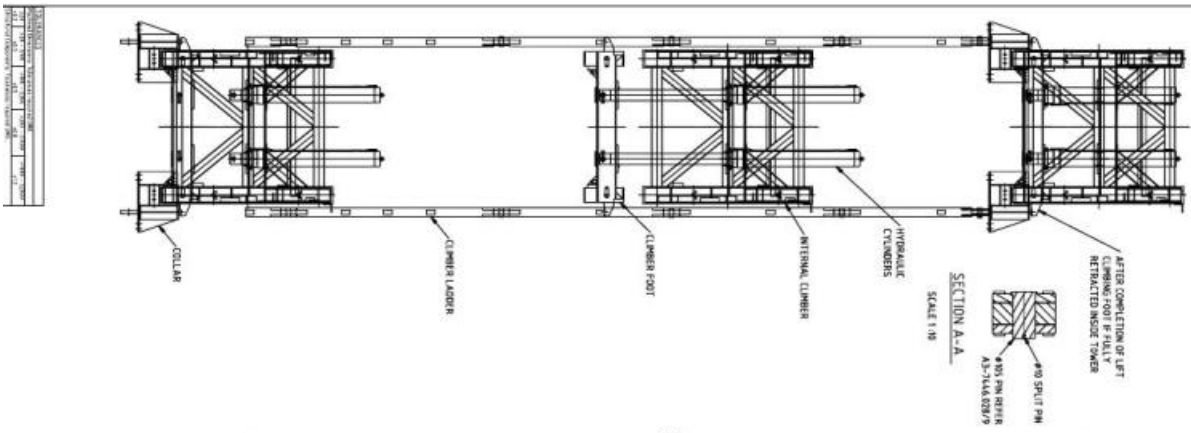
□

最大塔身高度 II	
爬距范围 I	

风速	工作状态风速	非工作状态风速
结构反力		
M		
V		
MK		
H1		
H2		

### 3. 爬升框





RANGE 19 TO 20m

RANGE 18 TO 19m

RANGE 17 TO 18m

RANGE 16 TO 17m

RANGE 15 TO 16m

RANGE 14 TO 15m

RANGE 13 TO 14m

RANGE 12 TO 13m

RANGE 11 TO 12m

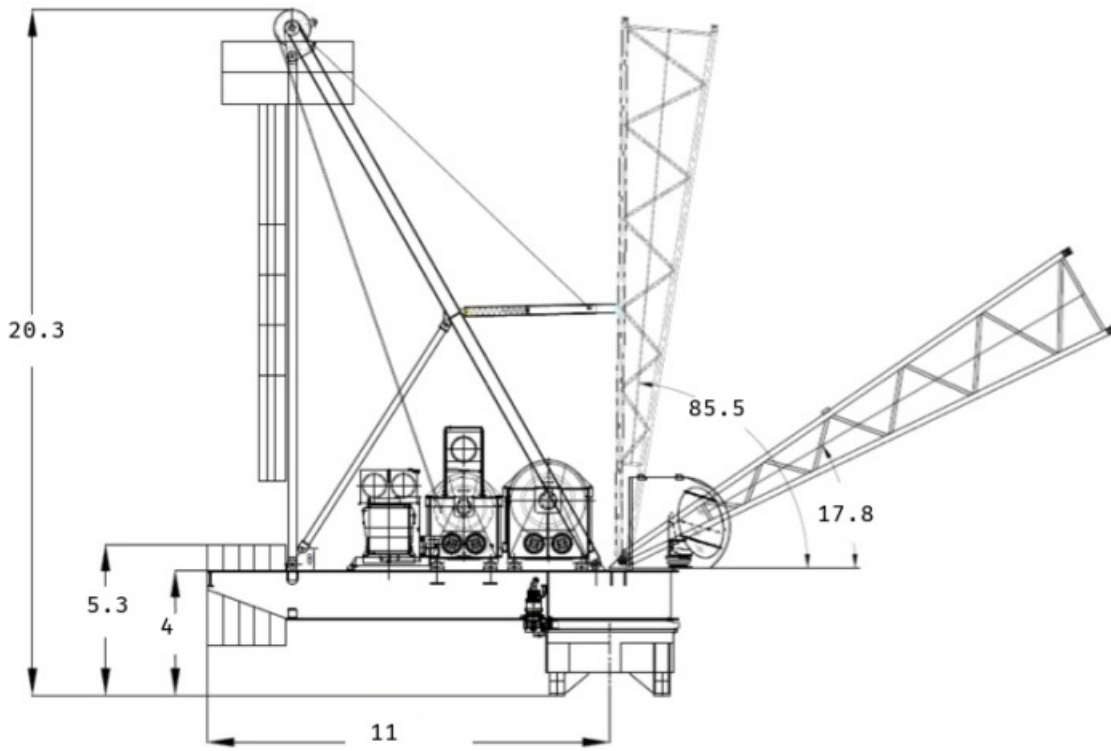
SELECTION TABLE

RANGE HEIGHT (M)	TOP 2.2m	4m LADDER	2m LADDER	1m LADDER	BOTTOM 5m	2000 PIN	#10 SPLIT PINS	MASS (KG)
11 TO 12	1	0	0	1	1	1	3	1789
12 TO 13	1	0	0	1	1	1	3	1789
13 TO 14	1	0	0	1	1	1	3	1789
14 TO 15	1	0	0	1	1	1	3	1789
15 TO 16	1	0	0	1	1	1	3	1789
16 TO 17	1	0	0	1	1	1	3	1789
17 TO 18	1	0	0	1	1	1	3	1789
18 TO 19	1	0	0	1	1	1	3	1789
19 TO 20	1	0	0	1	1	1	3	1789

REFERENCE DRAWINGS  
 A3-744A 020 CLIMBING LADDERS & PINS  
 A3-744B 020 INTERNAL CLIMBER ASSEMBLY  
 A3-744C 020 INTERNAL CLIMBER FOOT

FAVCO  
 PANELLE PAVCO CRANE PITY LTD. AUSTRALIA  
 H12900  
 CLIMBING LADDER ARRANGEMENT, TYPE 1296.6C TOWER  
 SCALE 1:10





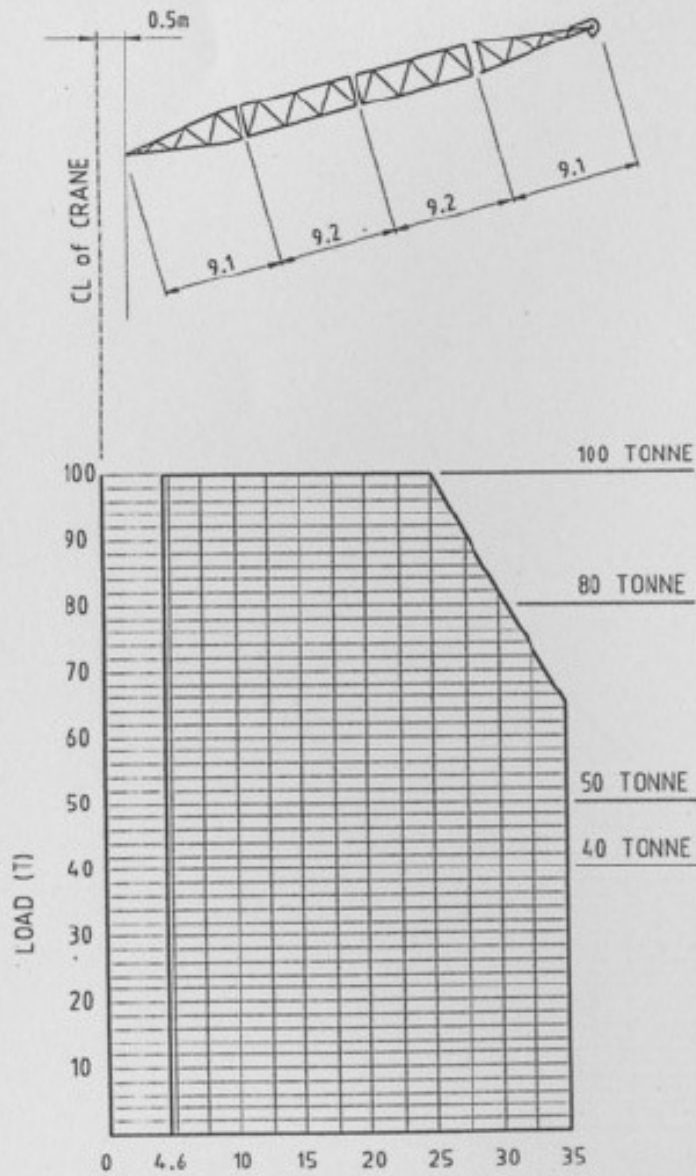
## 6. 设备清单

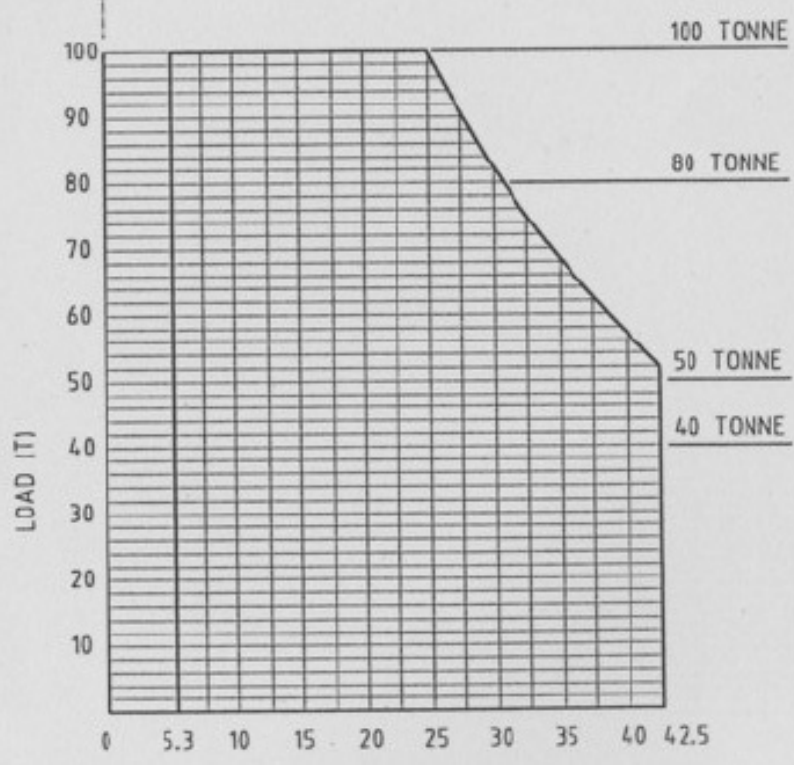
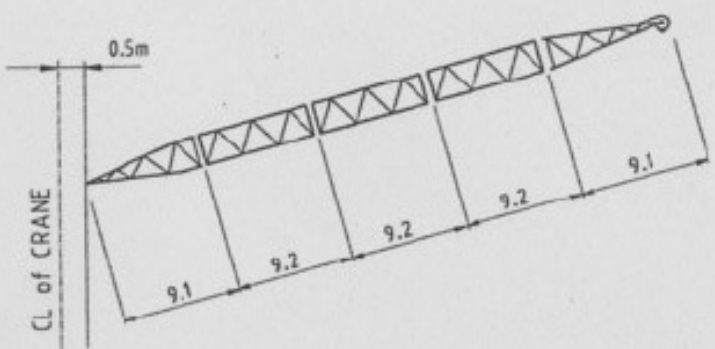
名称	数量	单重 (t)	总重 (t)	外形尺寸 (m) 长×宽×高	备注
<b>一、主机部分</b>					
机械平台 (前部)	1	18.5	18.5	6×3.65×2.12	含驾驶室
机械平台 (后部)	1	16.6	16.6	7.36×3.65×2.12	
人字架总成	1	20	20	17.4×3.3×6.7	
驾驶舱总成	1	1.3	1.3	3.45×3.9×1.8	
动力包	1	41.3	41.3	3.42×3.7×2.2	含主卷扬系统 27.7, 变幅系统8
下回转	1	20	20	4.8×3.6×2.9	含回转轴承和平台
油动力包	1	6.3	6.3	4×3×2.92	
<b>二、塔节部分</b>					
内顶升节总成	1	25	25	3.6×3.6×4	含顶升油缸和顶

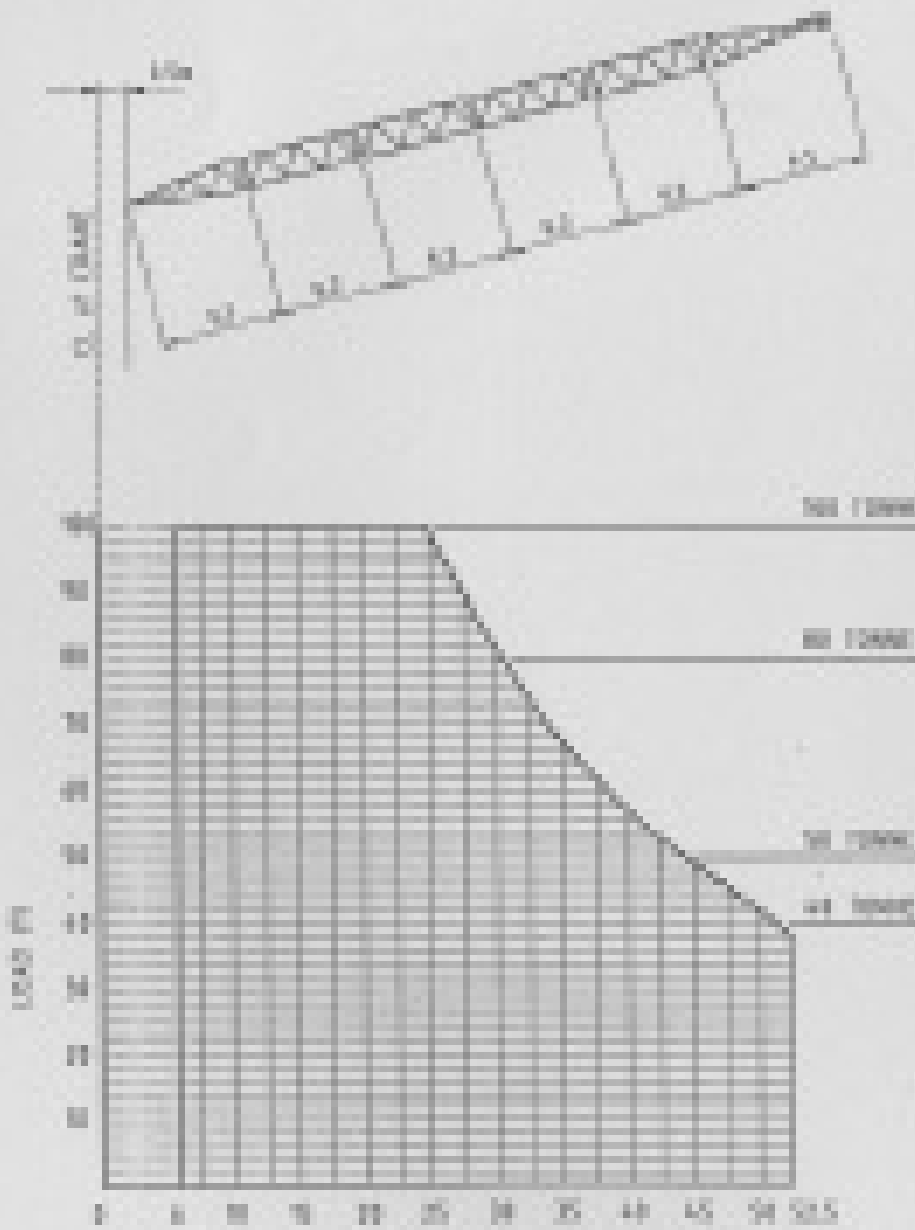


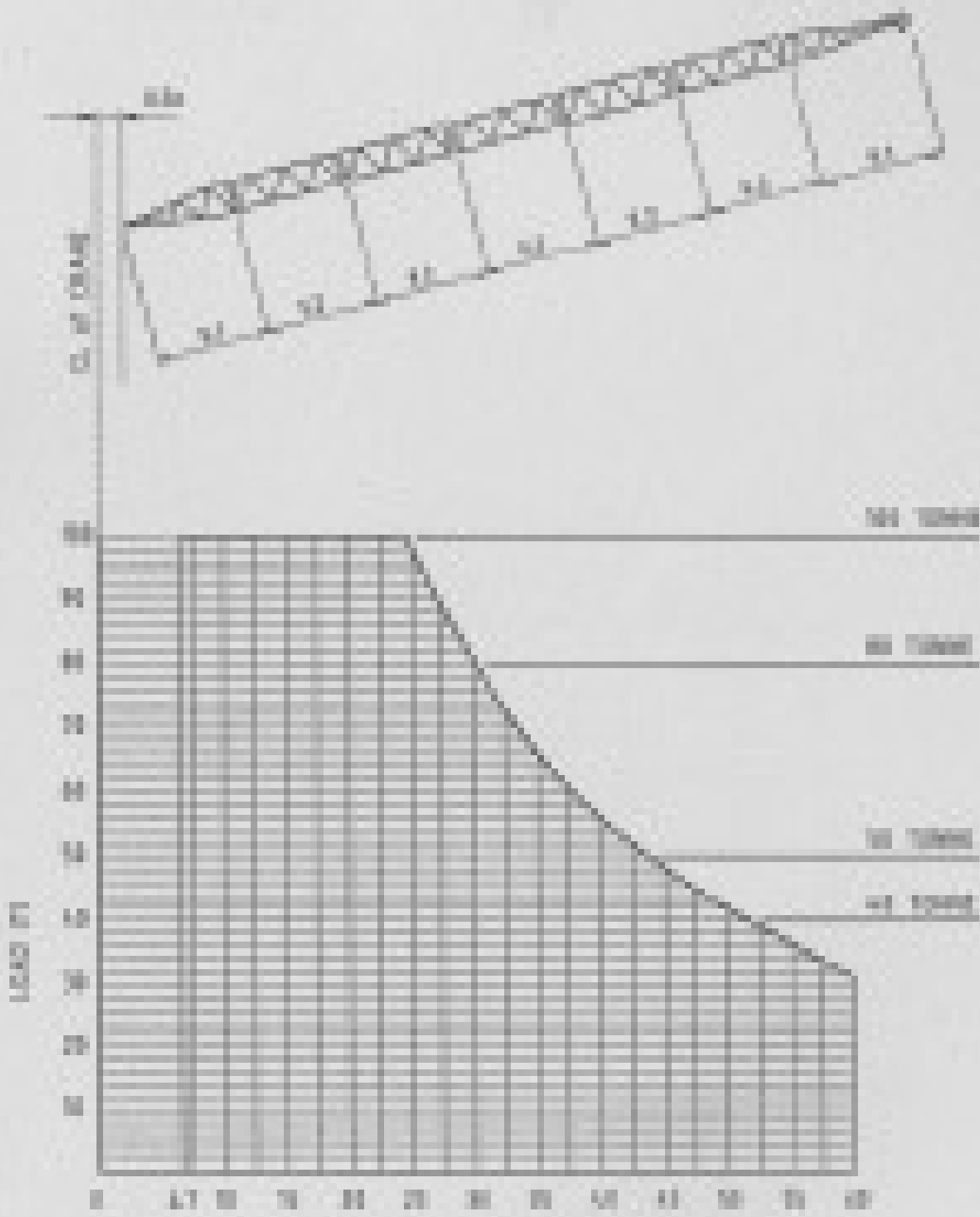
名称	数量	单重 (t)	总重 (t)	外形尺寸 (m) 长×宽×高	备注
标准节	12	9.2	110.4	3.6×3.6×4	
顶升套架	3	7.2	21.6	3.6×3.6×4	含爬升框
爬带	1	9.8	9.8	××	
加强节	2	10.2	20.4	3.6×3.6×4	
<b>三、塔臂部分</b>					
伸臂根节	1	2.5	2.5	3.6×3.2×9.1	
伸臂延长节_1	5	2.6	13	3.6×3.2×9.2	
伸臂顶节	1	3.4	3.4	3.6×3.2×9.1	
<b>四、吊索件</b>					
主吊钩	1	3.2	3.2	1.7×1×0.4	100
变幅滑轮组	1	2.5	2.5	2.3×1.4×0.8	
临时拉索	1	4	4	2.5×2.5×0.4	
变幅固定拉索	1	4	4	2.5×2.5×0.4	
<b>五、配重</b>					
配重块	15	7.8	117	4.41×0.1×3.24	
爬升压铁	2	10	20	××	
			<b>总重量</b>	<b>480.7999999999995 吨</b>	

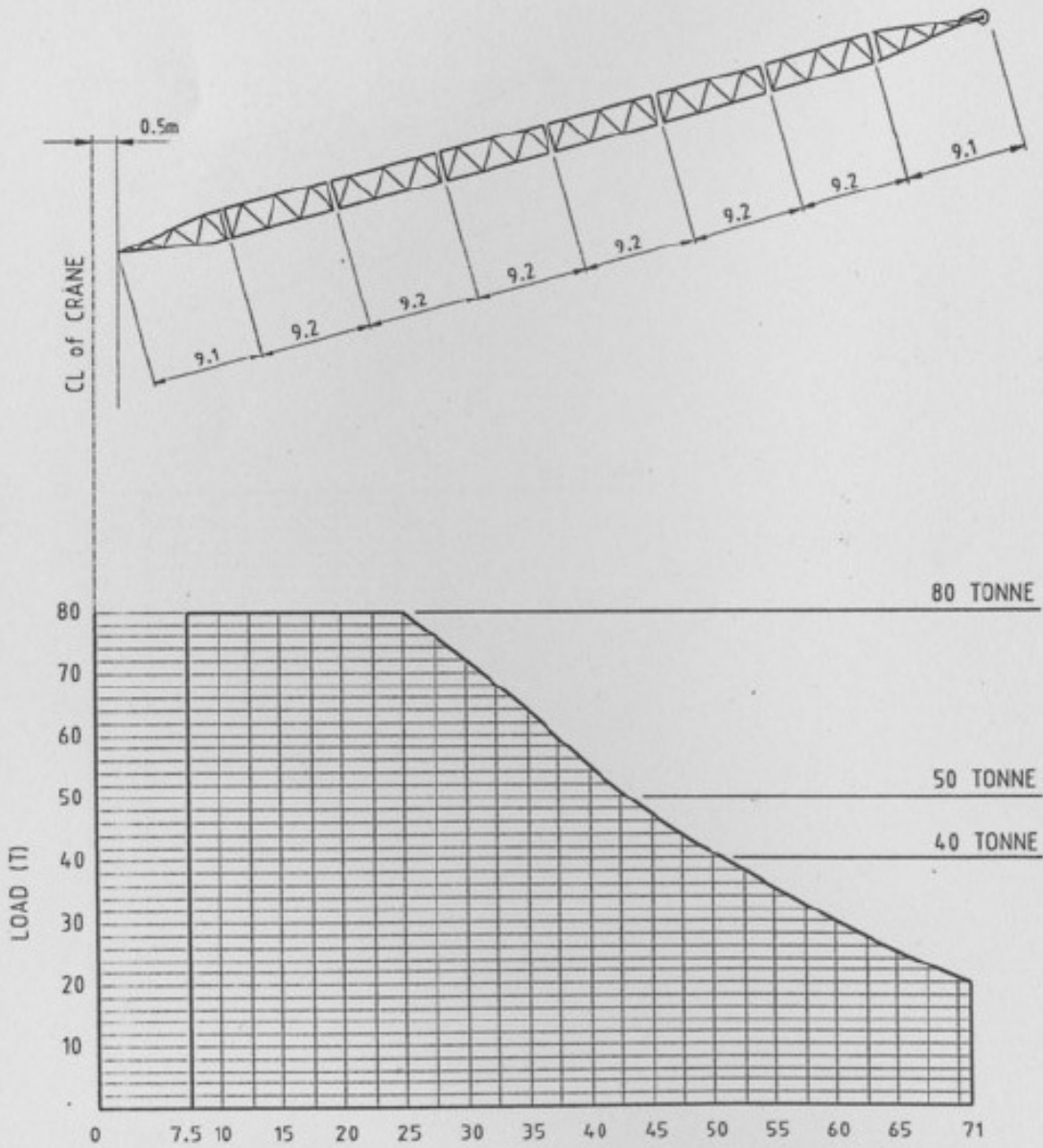
## 7. 载荷性能曲线及起重性能表

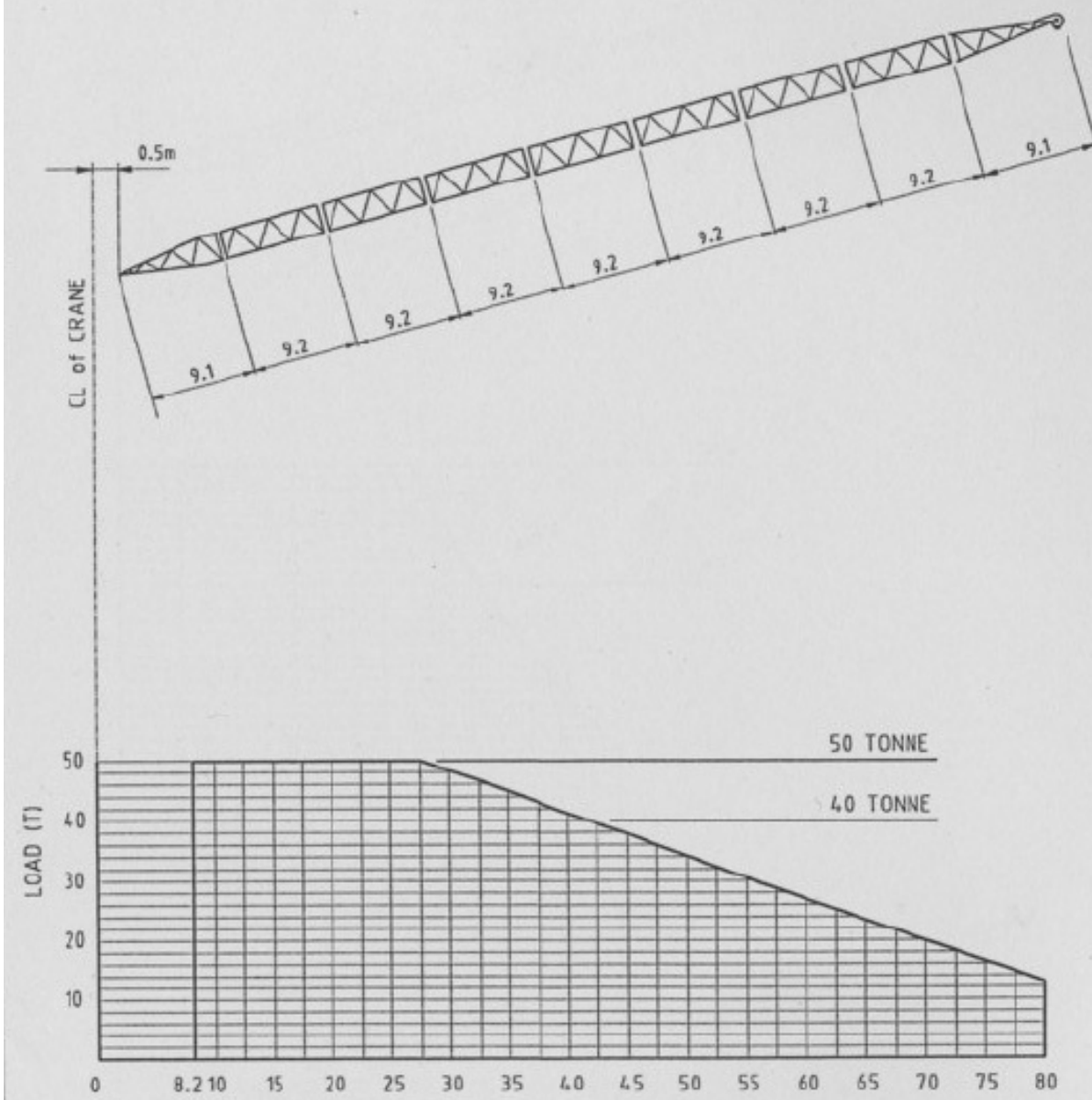












## 8. 其他证照资料

制造许可证:

3125-114

# CERTIFICATE OF QUALITY



28 Yarrunga Road, Prestons  
PO Box 456, Liverpool BC NSW 1871 Australia  
Telephone : 61 2 9608 2000  
Facsimile : 61 2 9607 0022

Certificate No.: CQ1620

CLIENT

SHANGHAI MACHINERY COMPLETE EQUIPMENT (GROUP) CORP. LTD.  
19/F, Heng Da Place  
285 Chang Shou Road,  
Shanghai PC200060,  
CHINA

CRANE MODEL	:	M1280D - TOWER CRANE
SERIAL No.	:	1620
QUANTITY	:	1 UNIT
MANUFACTURER	:	FAVELLE FAVCO CRANES PTY. LTD.
MANUFACTURING LOCATION	:	MALAYSIA AND AUSTRALIA.
COUNTRY OF ORIGIN	:	MALAYSIA

THE ABOVE CRANE WAS DESIGNED AND MANUFACTURED BY FAVELLE FAVCO CRANES IN 2009 TO CONFORM TO AUSTRALIAN STANDARD AS1418, PARTS 1 & 4.

Signed: \_\_\_\_\_

Date 17<sup>th</sup> March, 2010



Fahmi Z. Bachmid  
QUALITY ASSURANCE MANAGER  
For and on behalf of FAVELLE FAVCO CRANES PTY. LTD. AUSTRALIA



3125-11

CERTIFICATE  
OF  
QUANTITY / WEIGHT



28 Yarrunga Road, Prestons  
PO Box 456 Liverpool BC NSW 1871 Australia  
Telephone : 61 2 9608 2000 / 61 2 9607 0055  
Facsimile : 61 2 9607 0022

Certificate No.: CQW1620

Serial No.: 1620 FFC Job No.: 1/1620  
CRANE MODEL : TOWER CRANE M1280D  
MANUFACTURER : FAVELLE FAVCO CRANES PTY. LTD.

CLIENT

Shanghai Machinery Complete Equipment (Group) Corp. Ltd.  
19/F, Heng Da Place  
285 Chang Shou Road, Shanghai.PC200060 – China.

MEASUREMENT (CBM)	QTY	ITEM DESCRIPTION	GROSS WEIGHT (KGS)
	1	ONE (1) COMPLETE UNIT OF FAVELLE FAVCO LUFFING BOOM CRANE MODEL: M1280D S/N: 1620	175,850.00

Signed: \_\_\_\_\_

*Fahmi Bachmid*  
Fahmi Bachmid  
QUALITY ASSURANCE MANAGER  
For and on behalf of FAVELLE FAVCO CRANES PTY. LTD. AUSTRALIA

Date: 17<sup>th</sup> March, 2010

3125-44

# CERTIFICATE OF ORIGIN



28 Yarrunga Road, Prestons  
PO Box 456, Liverpool NSW 2170 Australia  
Telephone : 61 2 9608 2000  
Facsimile : 61 2 9607 0022

Certificate No.: CO1620

### CLIENT

SHANGHAI MACHINERY COMPLETE EQUIPMENT (GROUP) CORP. LTD.  
19/F, Heng Da Place  
285 Chang Shou Road,  
Shanghai PC200060,  
CHINA

CRANE MODEL	:	M1280D - TOWER CRANE
SERIAL No.	:	1620
QUANTITY	:	1 UNIT
MANUFACTURER	:	FAVELLE FAVCO CRANES PTY. LTD.
MANUFACTURING LOCATION	:	MALAYSIA AND AUSTRALIA.
COUNTRY OF ORIGIN	:	MALAYSIA

THE ABOVE CRANE WAS DESIGNED AND MANUFACTURED BY FAVELLE FAVCO CRANES IN 2009 TO CONFORM TO AUSTRALIAN STANDARD AS1418, PARTS 1 & 4.

Signed:

Date:

17<sup>th</sup> March, 2010



Fahmi Bachmid  
QUALITY ASSURANCE MANAGER  
For and on behalf of FAVELLE FAVCO CRANES PTY. LTD. AUSTRALIA

备案证书或IC卡:

# 上海市建筑起重机械产权备案登记证

## 设备信息栏

编号:沪-T-06344

设备名称:塔式起重机

产权单位:上海市机械施工集团有限公司

型号规格:M1280D

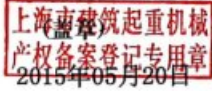
单位地址:上海市嘉定区顺达路615号

制造单位:Favelle Favco 起重机公司(澳大利亚)

出厂编号:1620

登记机关:上海市建设安全协会

出厂日期:2010年03月17日



特种设备生产许可证编号:

C01620

登记证编号:T004353